

Rotating cleaning nozzle PVDF MicroWhirly Series 500.191



Features:

- Developed for work in corrosive environments
- Good suitability for food contact and foam delivery
- Made completely of PVDF



Function video
www.lechler.com/de-en/medialibrary/videos-general-industry
 Or scan the QR code.

Series 500.191

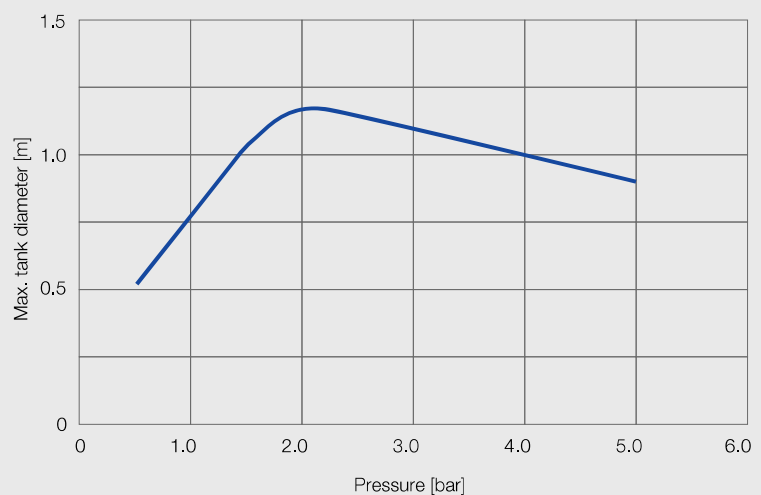
Technical data:

Maximum operating temperature 95 °C	Maximum ambient temperature 150 °C	Installation Operation in every installation position	Bearing Slide bearing made of PVDF
Material PVDF	Weight 12–30 g	Surface quality Ra ≤ 1,6 µm <small>OUTSIDE</small>	Surface quality Ra ≤ 1,6 µm <small>INSIDE</small>
Steam suitability Not suitable	Insertion diameter 30 mm	Recommended filter Line strainer with a mesh size of 0.3 mm/50 mesh	Recommended operating pressure 2 bar



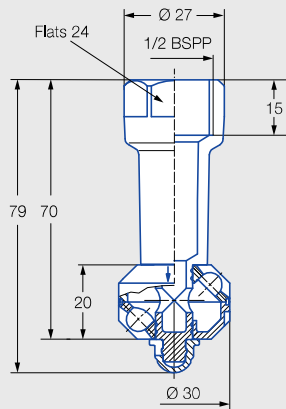
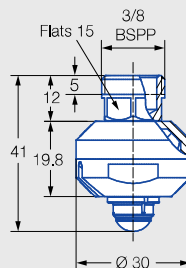
Max. tank diameter

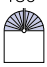



The specified maximum tank diameter applies to the recommended operating pressure and is indicative only. The type of soiling is also decisive for the cleaning result.



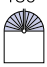

Overview of maximum tank diameter depending on pressure

Dimensions in mm.


**Standard version
Female thread**

**Compact version
Male thread**
Standard version with female thread

Spray angle	Ordering no. Type	Narrowest cross-section Ø [mm]	V̇ water [l/min]			V̇ water at 2 bar [m³/h]	Max. tank diameter [m]
			p [bar] (p _{max} = 5 bar)				
			1.0	2.0	3.0		
180° 	500.191.5E.02	2.2	9	13	16	0.8	0.8
180° 	500.191.5E.01	2.2	9	13	16	0.8	0.8
270° 	500.191.5E.31	2.2	14	20	25	1.2	1.1
360° 	500.191.5E.00	2.2	14	20	25	1.2	1.1

Compact version with male thread

Spray angle	Ordering no. Type	Narrowest cross-section Ø [mm]	V̇ water [l/min]			V̇ water at 2 bar [m³/h]	Max. tank diameter [m]
			p [bar] (p _{max} = 5 bar)				
			1.0	2.0	3.0		
180° 	500.191.5E.21	2.2	9	13	16	0.8	0.8
360° 	500.191.5E.22	2.2	14	20	25	1.2	1.1

Information on operation

The PVDF MicroWhirly is not suitable for operation with compressed air or another gas. Use above the recommended pressure will have a negative effect on the cleaning result and wear.